



**NORTHERN SUNRISE
COUNTY**

We've got it all!

Activity Guide

EXPLORE OUR NATURAL BEAUTY

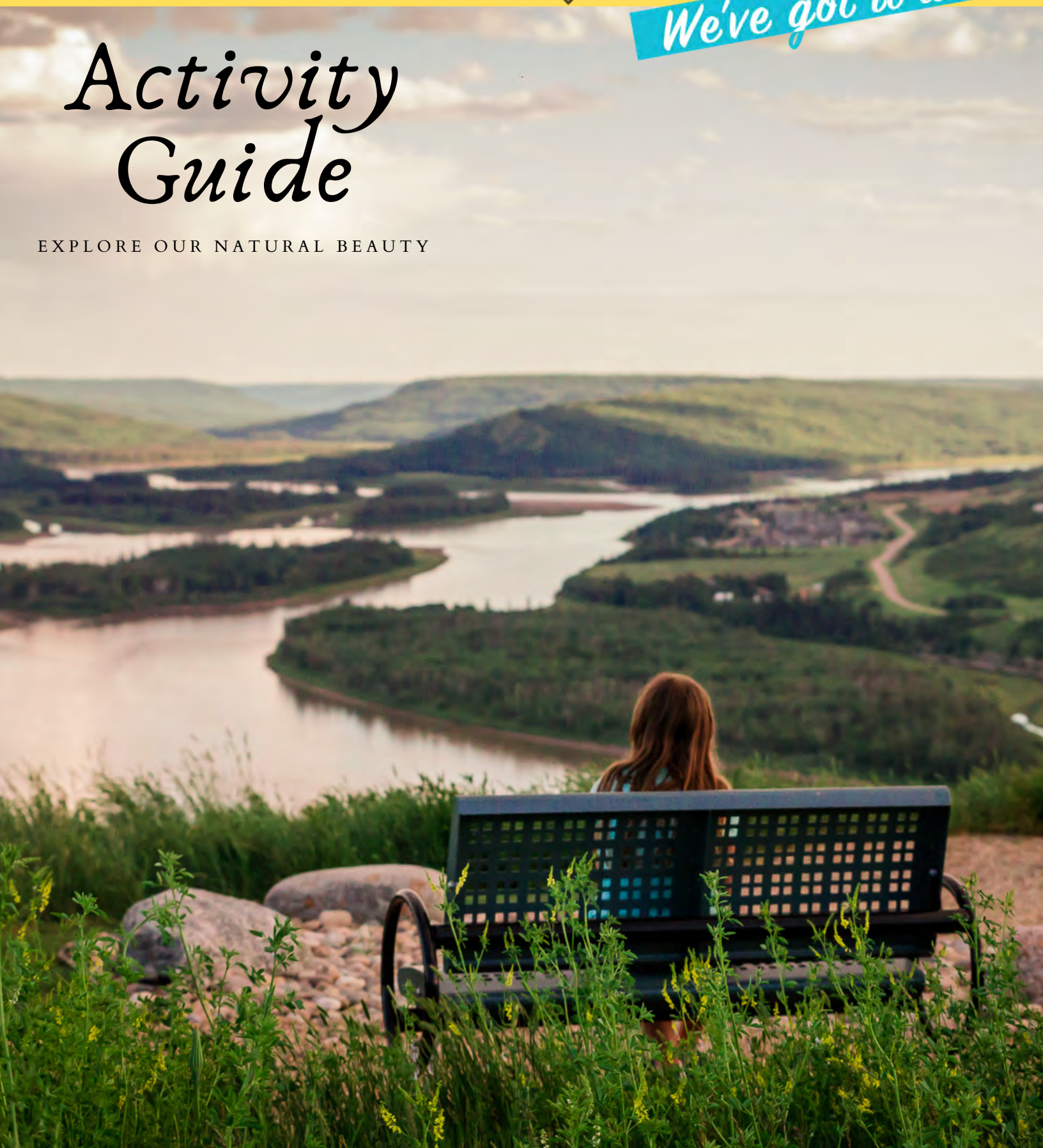


Table of Contents

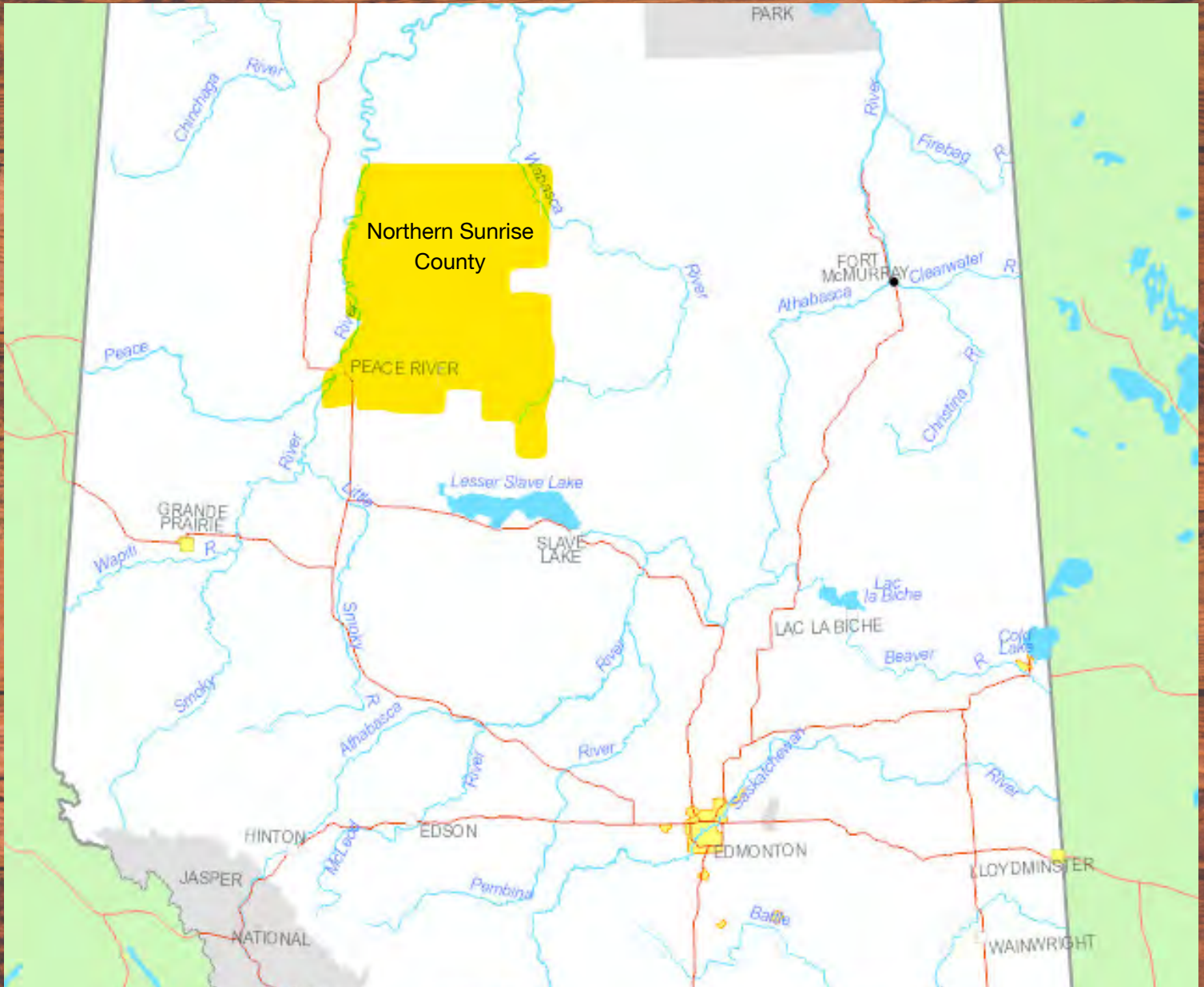


- Getting Here.....pg 3**
- Museumspg 4-5**
- Hike, Bike, Geocache.....pg 6-9**
- Historical sites.....pg 10-12**
- Campgrounds.....pg 13-14**
- Day use areapg 15**
- Fishingpg 16**
- Kayakpg 17**
- Golfing.....pg 18**
- Sports Activities.....pg 19**
- Wildlife Watching.....pg 20**
- Photography.....pg 21**
- Snowmobile Trails.....pg 22**



**NORTHERN SUNRISE
COUNTY**

Northern Sunrise County: Our Location



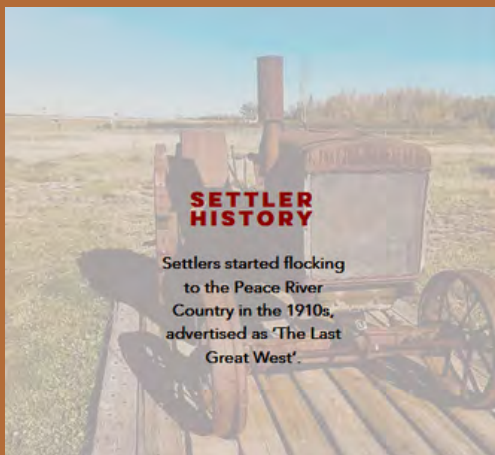
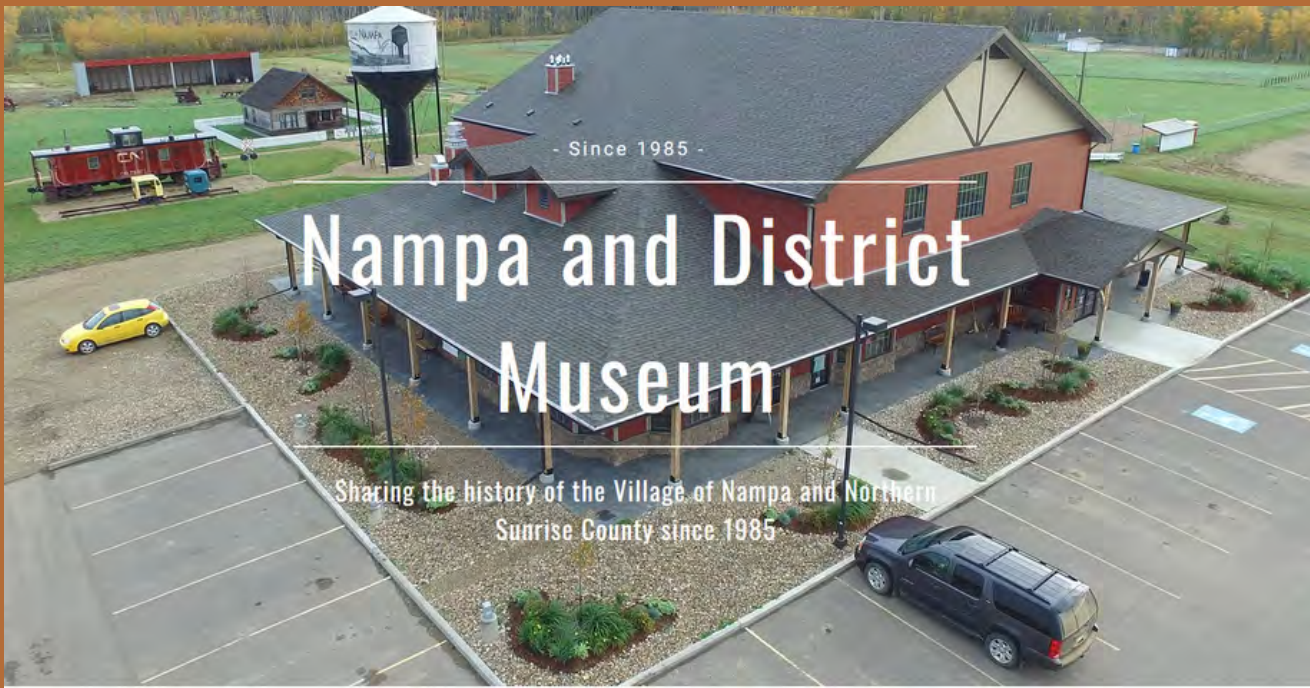
Welcome

Northern Sunrise County is located in the northern part of western Alberta, affectionately known as the Peace Country. Highway 2 connects Northern Sunrise County with the Town of Peace River, High Level (295.5 km), Grande Prairie (198.9 km), and Valleyview (141.3 km).

Find maps and locations by visiting our website at northernsunrise.net or scan the QR code



Museums



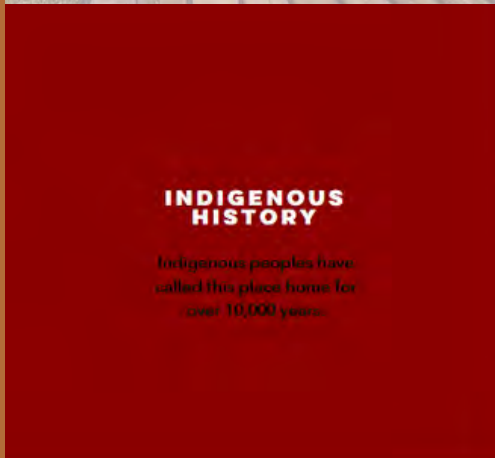
SETTLER HISTORY

Settlers started flocking to the Peace River Country in the 1910s, advertised as 'The Last Great West'.



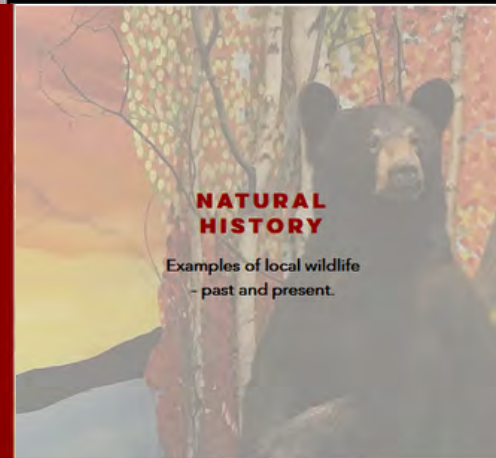
OIL & GAS DEVELOPMENT

Oil and gas development has been part of the region's history since 1912.



INDIGENOUS HISTORY

Indigenous peoples have called this place home for over 10,000 years.



NATURAL HISTORY

Examples of local wildlife - past and present.



9902 - 102 Avenue

780-322-2777

info@nampamuseum.ca

Nampa and District Historical Society



NORTHERN SUNRISE
COUNTY

Museums



St. Isidore Cultural Centre Museum

Tel.: 780-624-8481

<https://centreculturelstisidore.ca>

4 rue Bouchard

St-Isidore, AB,

You'll find costumes, pictures, and artifacts in the museum that tell the story of hardships and victories. Also, there's a train car replica inside the museum to help visualize the trek that the families had to make with their enormous families and livestock.



**NORTHERN SUNRISE
COUNTY**



Hike, Bike or Geocache

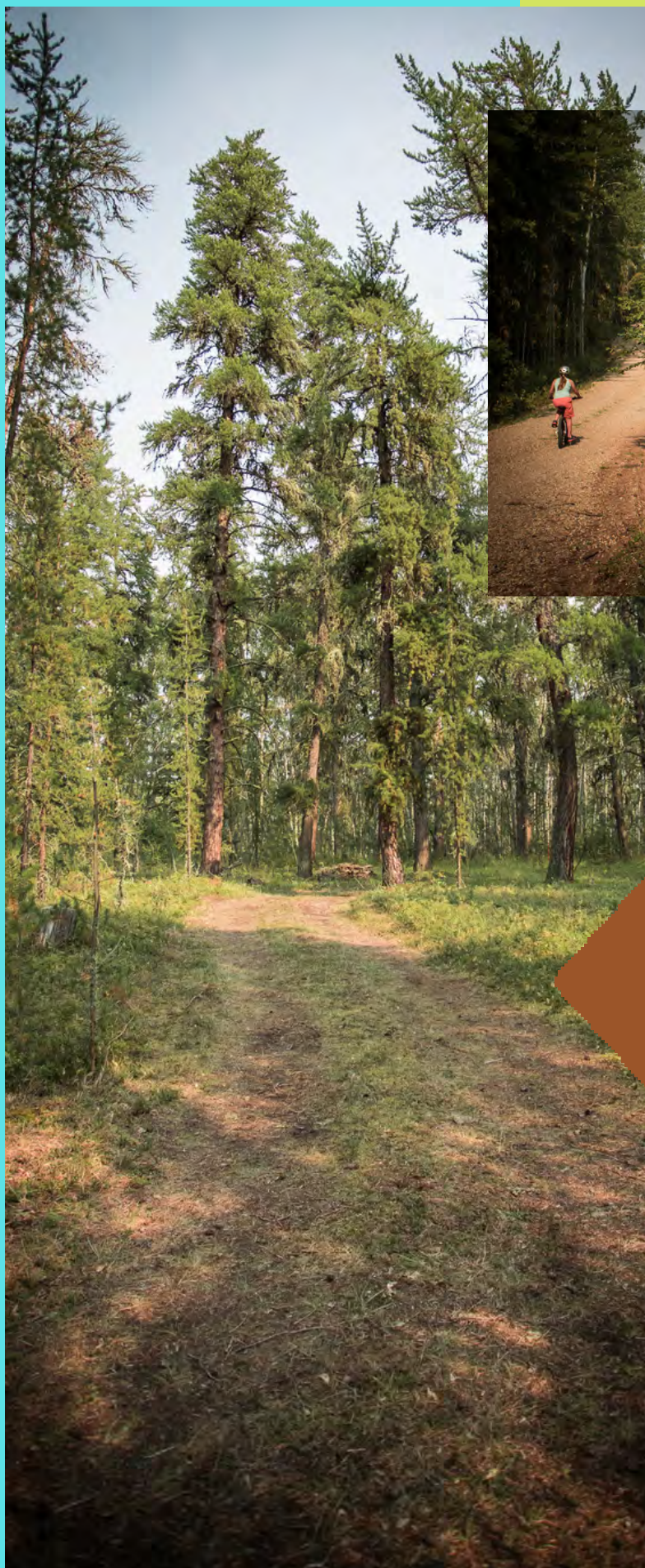
Northern Sunrise County has hundreds of kilometers of trails for hikers and bikers of different abilities. From beautiful meadows to twisty single tracks, heart-thumping downhill awaits.

Cecil Thompson Park offers a walking trail around the park with places to sit down, relax and enjoy your surroundings. Geocaching is also available at this location.



**NORTHERN SUNRISE
COUNTY**

Hike, bike or Geocache



Harmon Valley Campground

Enjoy a true wilderness experience at Harmon Valley Park. This quiet and picturesque campground offers many activities for everyone, including hiking trails, geocaching, children's playground and horseshoe pits.



**NORTHERN SUNRISE
COUNTY**

Hike, Bike or Geocache



NORTHERN SUNRISE
COUNTY



*just
breathe*

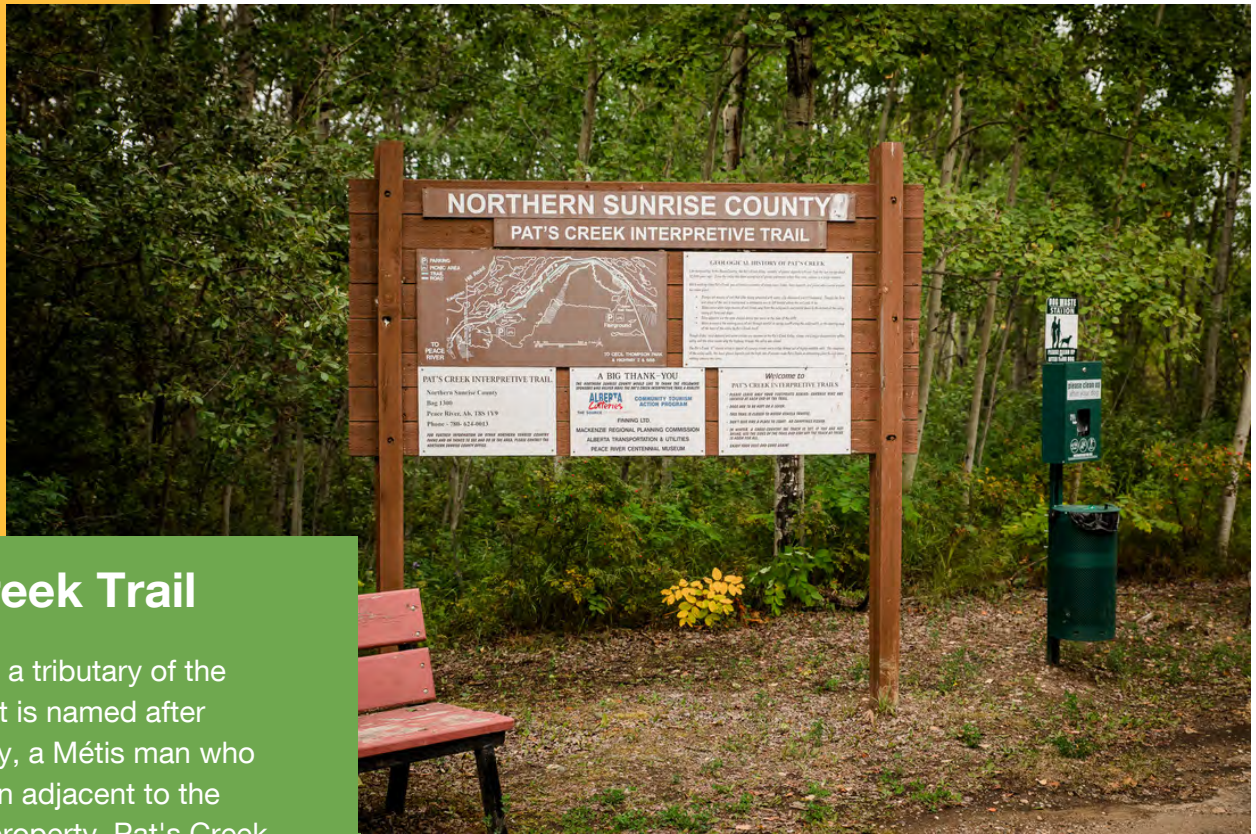


Murphy's Flats



Hike, fish, canoe or enjoy a picnic with your family and friends at this newly-developed day-use area. Murphy's Flats runs along the Smoky River, which may offer a natural sandy or rocky beach depending on the flow and height of the river water. The day-use picnic area offers fire pits, tables, and free firewood.

Hike, Bike or Geocache



Pat's Creek Trail

Pat's Creek is a tributary of the Peace River. It is named after Patrick Wesley, a Métis man who lived in a cabin adjacent to the creek on his property. Pat's Creek valley consists of glacial deposits left over from the last ice age about 12,000 years ago.

Activities:

- Hiking or running trails
- Mountain biking
- Geocaching
- Snowshoeing or cross country skiing
- Wildlife and birdwatching



**NORTHERN SUNRISE
COUNTY**



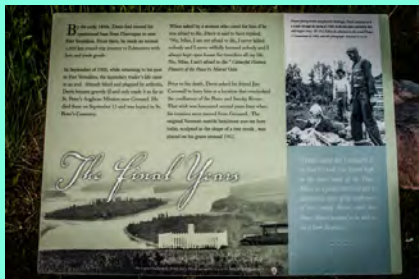


NORTHERN SUNRISE COUNTY

Twelve Foot Davis

Historical Sites

GRAVESITE



Historical Site



NORTHERN SUNRISE
COUNTY



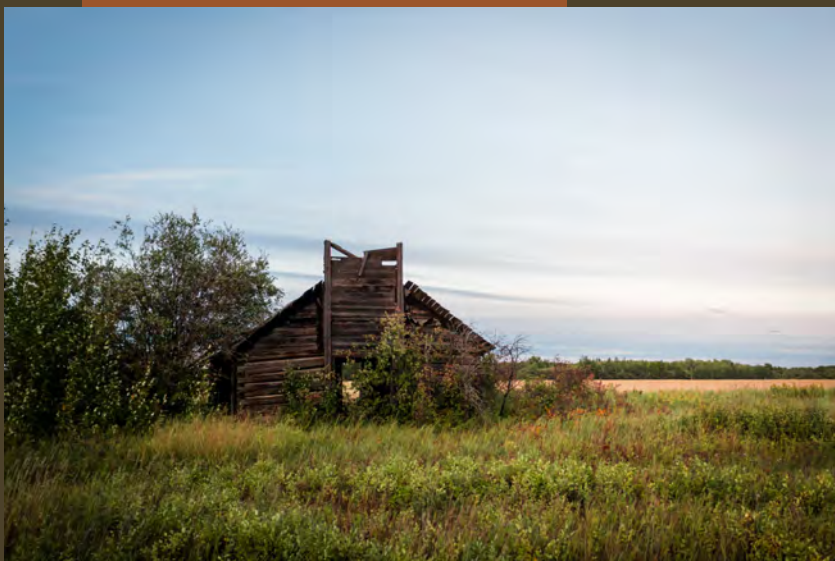
Sagitawa Lookout is located south of the Town of Peace River on Hwy 744 at the top of Judah Hill. Sagitawa is a Cree word meaning.

"Where the rivers meet". The Lookout has a spectacular view of the Town of Peace River and the confluence of the Peace and Smoky Rivers. The Lookout is complete with a picnic area and historical information. The Lookout point is a great viewpoint and photography spot. It has a picnic area with tables and geocaching in the surrounding area.



Judah

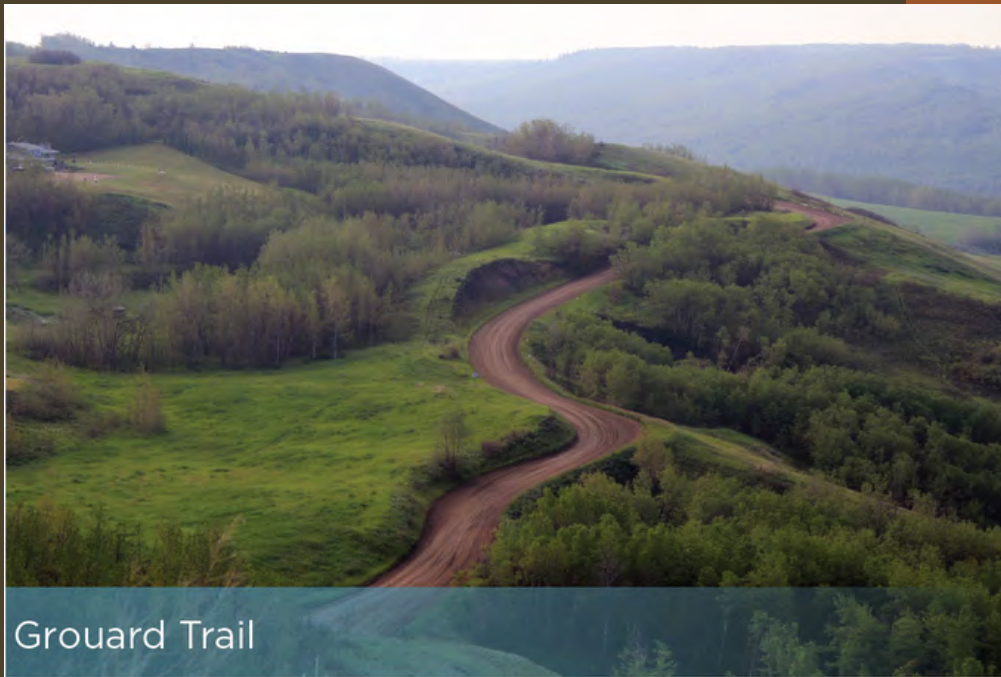
From Highway 744 turn onto old Judah road/ Twp RD 824. This historical Judah church still stands and dates back to 1927.



Historical Sites



NORTHERN SUNRISE
COUNTY



Grouard Trail

The Grouard Trail stretches 145 kilometers from the hamlet of Grouard on Lesser Slave Lake through the southwest corner of Northern Sunrise County, extending north of Heart River and Bearhead Creek to the Town of Peace River, formerly Peace River Crossing. The portion of the trail in Northern Sunrise County consists of a six-kilometer section that sweeps from Sunrise Road up the hill overlooking the Town of Peace River. The trail is a graded roadway easily spotted from both the town and the opposite slope across the Peace River. Traversing gently sloping sedimentary, sandstone, and shale beds, the trail crosses mixed boreal forests and open grasslands.

The Grouard Trail is a vital historic transportation route for First Nations into the areas now known as Northern Sunrise County and Peace River. Archaeologists consider the Grouard Trail and surrounding landscape one of the oldest transportation corridors in North America, first used by people and animals traveling south from the Bering Land Bridge approximately 10,000 years ago.

Before and after contact with Europeans, First Nations used the route as they hunted in the northern landscapes. When Alexander Mackenzie explored the route in 1793, he recorded that the Grouard Trail also served as a “Cree War Trail.”





Campgrounds

Harmon Valley Campground

Enjoy a true wilderness experience at Harmon Valley Park, which is located along the Heart River. This quiet and picturesque campground offers many activities for everyone, including hiking trails, geocaching, children's playground, and horseshoe pits. Harmon Valley Campground features 17 unserviced campsites, free firewood, pump water, pit toilets, picnic shelter, and cook shack.



**NORTHERN SUNRISE
COUNTY**

Campgrounds



"Rendez Vous is a French word meaning a predetermined place to meet. Our slogan here at Rendez-vous is "Experience the Peace" which implies visitors are welcome to make some enjoyable memories in the Peace Country.

Our family-run RV park has many features such as; a group fire pit c/w a BBQ shelter, group camping sites, 110 fully serviced RV sites, 3 rental cabins, onsite rental trailers, and many amenities like shower rooms, laundry facilities, and propane and firewood sales.



Contact us at

(780) 618-1345

877-450-4284

950 WOODS ROAD, T8S 1Y9
EAST HILL



**NORTHERN SUNRISE
COUNTY**

Day-Use



**NORTHERN SUNRISE
COUNTY**



Murphy's Flats

**Sagitawa
Lookout**

**Cecil
Thompson
Park**



All these day-use areas offer picnic tables. Murphy's Flats and Cecil Thompson Park have fire pits and access to free firewood.



Fishing



- Cecil Thompson Park
- Cadotte Lake
- Haig Lake
- Murphy's Flats
- Harmon Valley Campground



**NORTHERN SUNRISE
COUNTY**

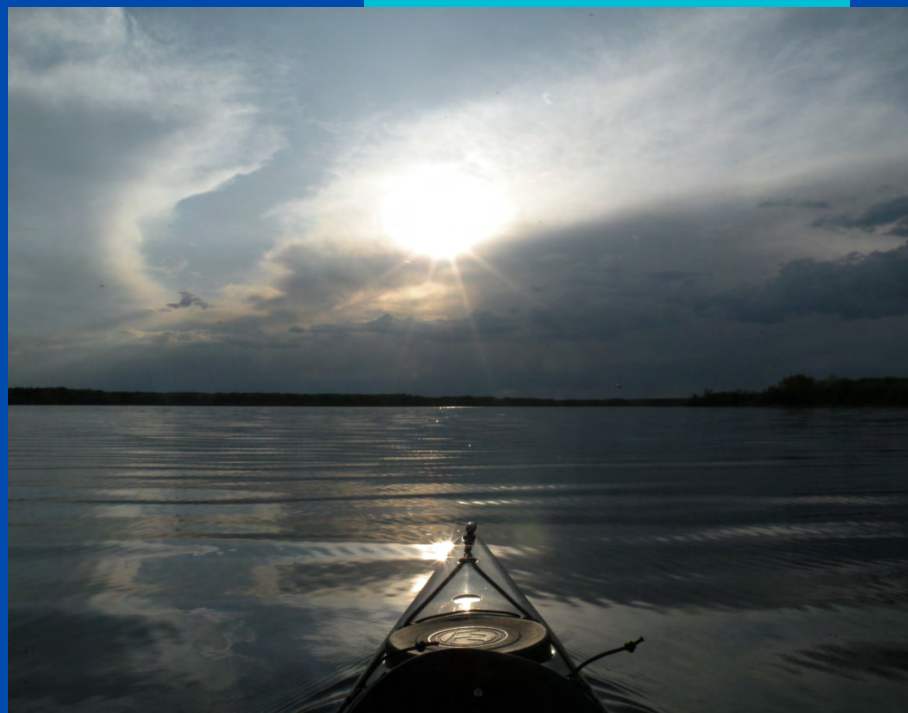


NORTHERN SUNRISE
COUNTY

Kayak or Canoe



For recreational paddlers, the Smoky, Heart, & Peace rivers or Cadotte & Haig lakes offer a calm and gentle run. You can paddle for one hour to a full day. River access can be found at Murphy's Flats, Town of Peace River, or Harmon Valley Campground.



Golf



**NORTHERN SUNRISE
COUNTY**



The Heart River Golf Club boasts lush grass greens, rolling fairways, multiple blind tee shots, and the winding Heart River that heightens the challenge on five of the nine holes. We also offer a driving range, licensed clubhouse, power cart rentals, a serviced campground, and more. It's a perfect place to book a game or a weekend with friends and family.

For more information, visit our website at www.heartrivergolf.com.



Directions to the golf course can be found on the County website.

780-322-3977

Sports Activities



**NORTHERN SUNRISE
COUNTY**



**Lubicon Lake
and
Marie Reine
communities
have an outdoor
Sports Court**

Beach Volleyball at Cecil Thompson Park

Bring your own volleyball



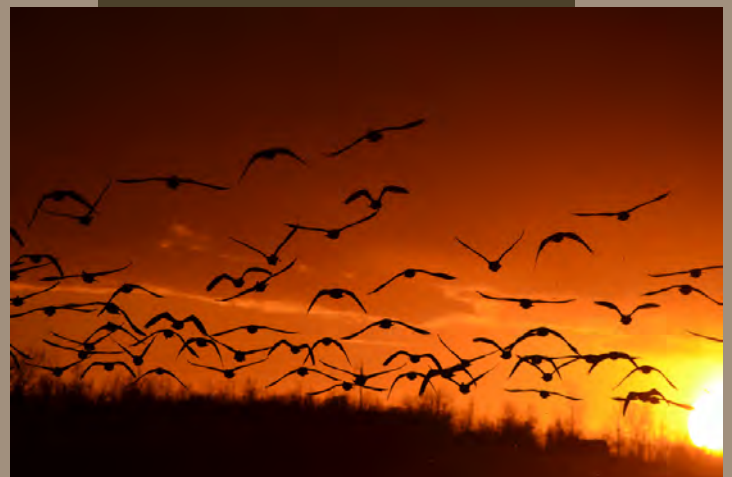
Outdoor Skating Rinks

- **Mamowintowin Hall**
- **Cadotte Lake**
- **St. Isidore**
- **Little Buffalo School
Yard**

Wildlife Watching

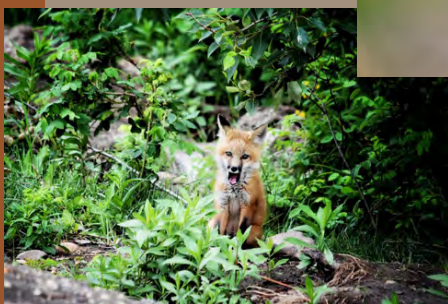
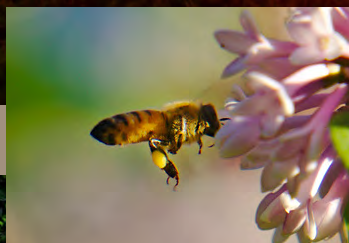
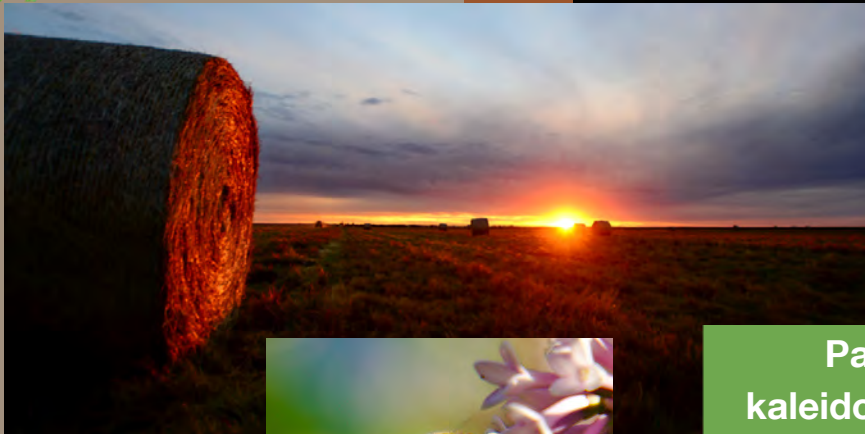
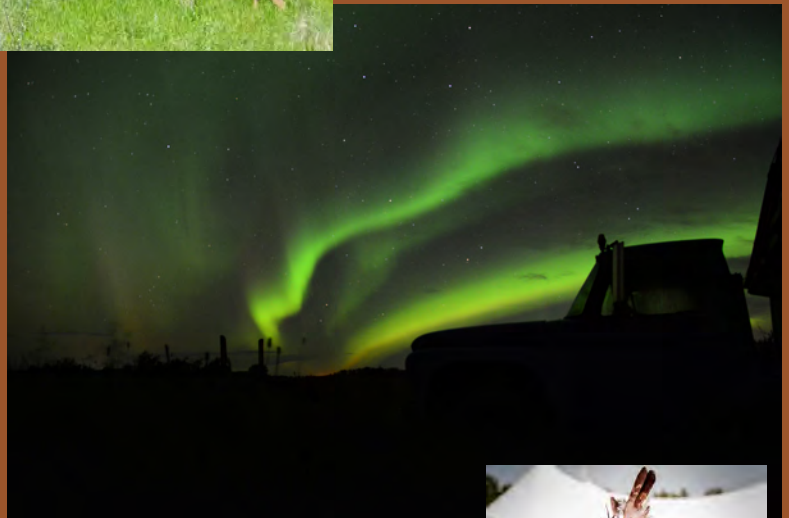


A vast wilderness area encompasses Northern Sunrise County. Visiting any of the County's attractions will offer opportunities to watch our local wildlife. Please do proceed with caution when you encounter any wildlife.



**NORTHERN SUNRISE
COUNTY**

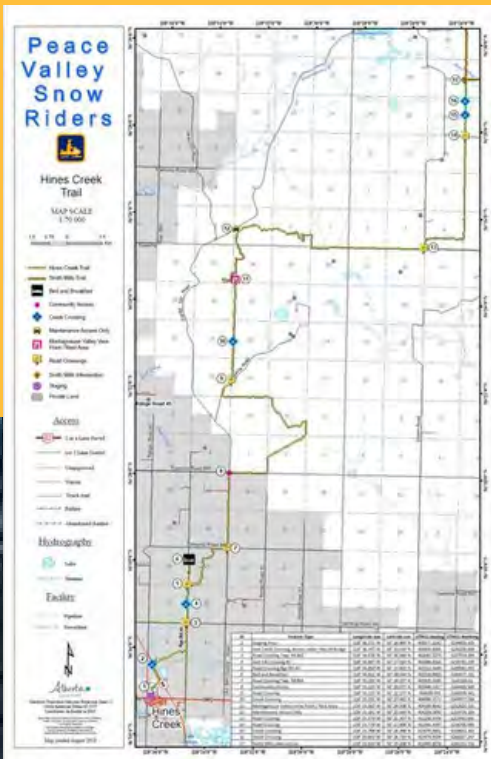
Photographer's Dream



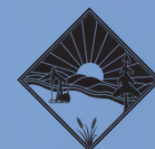
Panoramic vistas, floral kaleidoscopes, majestic wildlife, and adventure activities are all waiting to be photographed. Northern Sunrise County is also home to many animals and birds. Many annual cultural events offer opportunities to capture the County's rich culture and heritage.

Snowmobile Trail

Peace Valley Snow Riders



Visit www.peacevalleysnowriders.com for more information



NORTHERN SUNRISE COUNTY